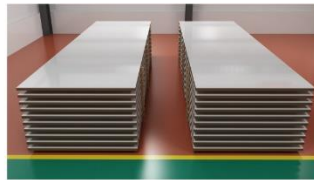




Sichuan Jinglei Science And  
Technology Co.,Ltd.



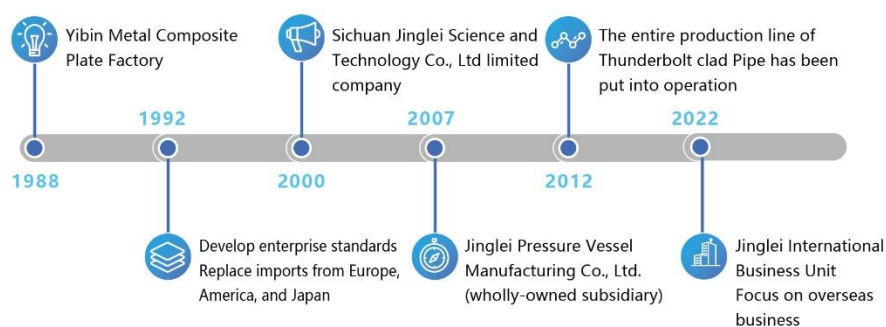
Corrosion-resistant and high-temperature-resistant clad materials, clad pipes and complete sets of equipment required under high-sulfur and sulfur-containing oil and gas corrosion conditions!

With world-class quality, timely supply and the highest cost performance, the company wholeheartedly serves the owners!

## 1 COMPANY PROFILE

Sichuan Jinglei Science & Technology Co., Ltd. is located in Yibin city, Sichuan province, China, established in 1988, which is the first enterprise to realize the application of explosive welding process to the industrial production of metal clad materials in China. The production capacity, annual output, market share are in the forefront of the industry. The company mainly produces bimetal clad plates, bimetal clad pipes and pipe fittings, pressure vessels, etc. The products are widely used in petroleum, chemical industry, natural gas, new energy and water conservancy and power industries, and exported to Turkmenistan, Kazakhstan, Mexico, Italy, Australia and other countries and regions.

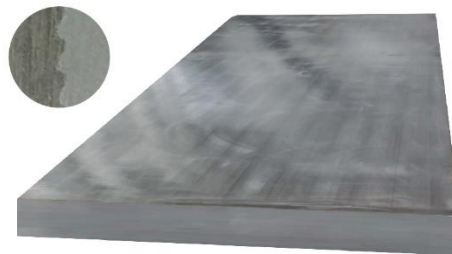
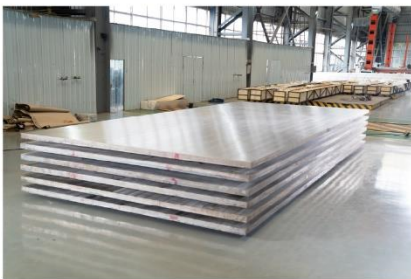
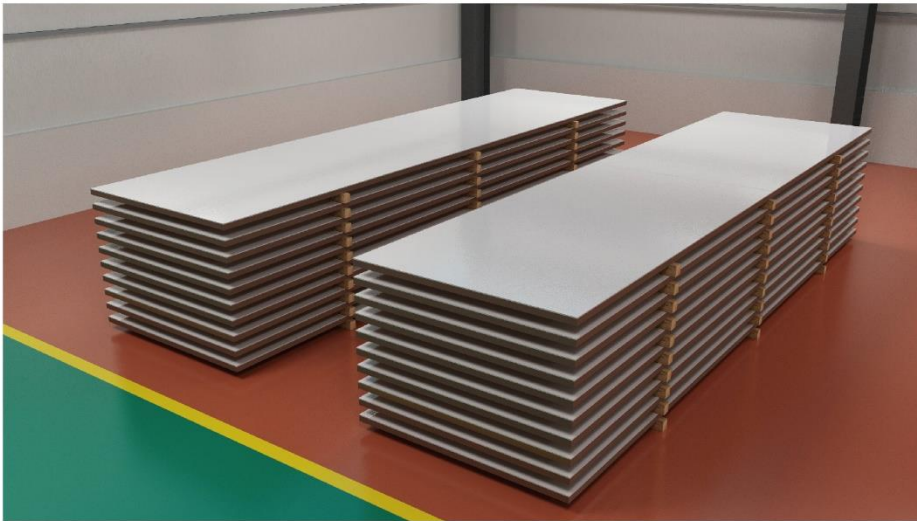
## 2 DEVELOPMENT HISTORY



## EXPLOSION WELDING BIMETALLIC CLAD PLATE

### **Explosive welded bimetal clad plates**

The bimetal clad plate has all the characteristics of strong corrosion resistance, high strength, high temperature resistance, and high cost performance, etc. All the indexes have reached the requirements of international advanced standards and obtained the American ASME certificate. Jinglei can produce clad plates, such as stainless steel – steel, nickel – steel, nickel base alloy – steel, titanium – steel, zirconium – steel, tantalum – steel, with 14m length, 4.5m width, and 350mm thickness.





## Execution standards

### Manufacturer's Standards

- ASME SA263,SA264,SA265
- ASME B898,B432
- JIS G3601,G3602,G3603,G3604
- NB/T47002.1~4
- GB/T8165,GB/T8547

### Product Specifications

- Clad Thickness 2~15mm
- Base Material Thickness 6~300mm
- Finished Width 1450~4500mm
- Finished Length 1000~13500mm
- Irregular and oversized specifications can be negotiated and determined.

### Material Types

- Stainless Steel Clad Plate
- Nickel Steel Clad Plate
- Titanium Steel Clad Plate
- Copper Steel Clad Plate
- Zirconium and Tantalum Steel Clad Plates
- NB/T47002.1~4

### Performance Characteristics

- Serrated Metallurgical Bonding
- Shear Strength Above 300MPa
- Excellent Processing Performance
- Welding of Refractory Metals
- Single or Batch Production with Fast Cycle

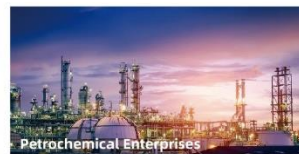
## Application scope



Oil Transportation Equipment



Offshore Oil and Gas Development



Petrochemical Enterprises



Oil Production



1.oil and gas



2. chemical industry



3. Salt chemical industry



4 .New Energy Chemical Industry

## C4 BIMETALLIC CLAD PIPES AND FITTINGS

### **Bimetal clad pipes and pipe fittings**

The bimetal clad pipe independently developed by the company is widely used in natural gas collection and transportation pipelines, oil and gas long distance pipelines, new coal chemical industry, new energy chemical industry, etc. It has obtained API 5LD certification from the American Petroleum Institute, and the technical indexes have reached the international advanced level, with strong technology and economy, and has obtained a number of Chinese invention patents. The bimetal clad pipe has the characteristics of stable process, reliable performance and high cost performance.





## Clad Pipe Specification

Size: 168.3 mm-2032 mm (6 inches -80 inches)

Carbon Steel: API 5L, ASME SA516

Cladding: 316L, 317L, 6 Mo, 2205, 2507, N08825, N06625, N200, N201, C22, C276, etc.

Length: 12 metres, DJ (24 metres) or customised lengths

Standards: API5LD, DNV ST-F101, SY/T 6623 and custom standards

## Application scope



## 5 PRESSURE VESSEL MANUFACTURING

### Pressure vessel manufacture and installation

The company has the qualification of pressure vessel design, manufacture and installation, and has the qualification of ASME certificate U stamp. Provide tower, reactor, heat exchanger, storage tank for petroleum, petrochemical, coal chemical, natural gas chemical and new energy chemical, etc.

### Product characteristics

#### Manufacturer's Standard

- ASME VIII DIV.I
- GB150
- GB151

#### Manufacturing specifications

- Equipment diameter:  $\leq 4500\text{mm}$
- Equipment wall thickness:  $\leq 300\text{mm}$
- Total length (height)  $\leq 48000\text{mm}$
- Equipment unit weight:  $\leq 400\text{ ton}$

#### Manufacturing type

- Reaction pressure vessel, heat exchanger
- Separate container, mixing container
- Storage container

#### Application

- Refining
- Vacuum salt
- Coal chemical industry
- Seawater desalination
- New Energy Chemical Industry



# C6 QUALIFICATIONS



The American Society of Mechanical Engineers



## CERTIFICATE OF AUTHORIZATION

The named company is authorized by The American Society of Mechanical Engineers (ASME) for the scope of activity shown below in accordance with the applicable rules of the ASME Boiler and Pressure Vessel Code. The use of the ASME Single Certification Mark and the authority granted by this Certificate of Authorization are subject to the provisions of the agreement set forth in the application. Any construction stamped with the ASME Single Certification Mark shall have been built strictly in accordance with the provisions of the ASME Boiler and Pressure Vessel Code.

### COMPANY:

**Sichuan Jinglei Pressure Vessels Manufacture Co., Ltd.**  
No. 236 Wenhua Street, Kongtan Town, Cuiqing District  
Yibin City, Sichuan Province 644623  
People's Republic of China

### SCOPE:

**Manufacture of pressure vessels at the above location and field sites controlled by the above location (This authorization does not cover impregnated graphite)**

**AUTHORIZED:** May 19, 2022  
**EXPIRES:** May 18, 2025  
**CERTIFICATE NUMBER:** 39560

*Rachel B. Caplan*  
Board Chair, Conformity Assessment

*LM Eisenberg*  
Managing Director, Standards & Engineering Services



## China National Accreditation Service for Conformity Assessment LABORATORY ACCREDITATION CERTIFICATE (Registration No. CNAS L8164)

**Clad Materials Research Institute of Sichuan Jinglei  
Science & Technology Co., Ltd.**

(Legal Entity: Sichuan Jinglei Science and Technology Co., Ltd.)  
Kongtan, Yibin, Sichuan, China

is accredited in accordance with ISO/IEC 17025:2017 General Requirements for the Competence of Testing and Calibration Laboratories (CNAS-CL01 Accreditation Criteria for the Competence of Testing and Calibration Laboratories) for the competence to undertake the service described in the schedule attached to this certificate.

The scope of accreditation is detailed in the attached schedule bearing the same registration number as above. The schedule forms an integral part of this certificate.

**Effective Date:** 2024-12-11  
**Expiry Date:** 2030-12-10

Signed on behalf of China National Accreditation Service for Conformity Assessment

*陈朝华*

China National Accreditation Service for Conformity Assessment (CNAS) is authorized by Certification and Accreditation Administration of the People's Republic of China (CMAA) to operate the national accreditation schemes for conformity assessment. CNAS is a signatory of the International Laboratory Accreditation Cooperation Mutual Recognition Arrangement (ILAC-MRA) and the Asia-Pacific Accreditation Cooperation Mutual Recognition Arrangement (APAC-MRA). The validity of the certificate can be checked on CNAS website at <http://www.cnas.org.cn/english/index.html>.



**EU CERTIFICATE OF QUALITY SYSTEM APPROVAL**  
In accordance with the requirements of the Pressure Equipment Directive 2014/68/EU

This is to certify that the Quality Management System of:  
**Sichuan Jinglei Science and Technology Co., Ltd.**  
No. 1, Group 10, Mini Village, Baifu Town, Cuiqing District,  
Yibin City, Sichuan Province,  
People's Republic of China  
United Social Credit Code: 91511500MA6K192G

has been assessed against the requirements of Annex 1, Part 4, of the Pressure Equipment Directive (2014/68/EU) and EN ISO 9001:2015, and found to conform to the requirements of the Pressure Equipment Directive.

Manufacture of metal cladding plates in accordance with Annex 1 paragraph 4.3 of the Pressure Equipment Directive.  
(See attached schedule)

Approved in accordance with the conditions of the certificate of approval in accordance with the requirements of the Pressure Equipment Directive and EN ISO 9001:2015, and found to conform to the requirements of the Pressure Equipment Directive.

**Certificate No.:** 0343/PEDM/BJ00051021/A  
**Original Period:** 14 March 2025  
**Current Certificate:** 07 March 2025  
**Certificate Expiry:** 13 March 2028  
**Notified Body No.:** 0143

*Ben Hayes*  
Notified Body Representative



**CERTIFICATE SCHEDULE**  
0343/PEDM/BJ00051021/A  
In accordance with the requirements of the Pressure Equipment Directive 2014/68/EU

Sichuan Jinglei Science and Technology Co., Ltd.  
No. 1, Group 10, Mini Village, Baifu Town, Cuiqing District,  
Yibin City, Sichuan Province,  
People's Republic of China

**Details of metal cladding plates:**

Material Grade and Dimensions	Product Description	Material Grade
ASTM A516, A517, A518, A519, A520, A521, A522, A523, A524, A525, A526, A527, A528, A529, A530, A531, A532, A533, A534, A535, A536, A537, A538, A539, A540, A541, A542, A543, A544, A545, A546, A547, A548, A549, A550, A551, A552, A553, A554, A555, A556, A557, A558, A559, A560, A561, A562, A563, A564, A565, A566, A567, A568, A569, A570, A571, A572, A573, A574, A575, A576, A577, A578, A579, A580, A581, A582, A583, A584, A585, A586, A587, A588, A589, A590, A591, A592, A593, A594, A595, A596, A597, A598, A599, A600, A601, A602, A603, A604, A605, A606, A607, A608, A609, A610, A611, A612, A613, A614, A615, A616, A617, A618, A619, A620, A621, A622, A623, A624, A625, A626, A627, A628, A629, A630, A631, A632, A633, A634, A635, A636, A637, A638, A639, A640, A641, A642, A643, A644, A645, A646, A647, A648, A649, A650, A651, A652, A653, A654, A655, A656, A657, A658, A659, A660, A661, A662, A663, A664, A665, A666, A667, A668, A669, A670, A671, A672, A673, A674, A675, A676, A677, A678, A679, A680, A681, A682, A683, A684, A685, A686, A687, A688, A689, A690, A691, A692, A693, A694, A695, A696, A697, A698, A699, A700, A701, A702, A703, A704, A705, A706, A707, A708, A709, A710, A711, A712, A713, A714, A715, A716, A717, A718, A719, A720, A721, A722, A723, A724, A725, A726, A727, A728, A729, A730, A731, A732, A733, A734, A735, A736, A737, A738, A739, A740, A741, A742, A743, A744, A745, A746, A747, A748, A749, A750, A751, A752, A753, A754, A755, A756, A757, A758, A759, A760, A761, A762, A763, A764, A765, A766, A767, A768, A769, A770, A771, A772, A773, A774, A775, A776, A777, A778, A779, A780, A781, A782, A783, A784, A785, A786, A787, A788, A789, A790, A791, A792, A793, A794, A795, A796, A797, A798, A799, A800, A801, A802, A803, A804, A805, A806, A807, A808, A809, A810, A811, A812, A813, A814, A815, A816, A817, A818, A819, A820, A821, A822, A823, A824, A825, A826, A827, A828, A829, A830, A831, A832, A833, A834, A835, A836, A837, A838, A839, A840, A841, A842, A843, A844, A845, A846, A847, A848, A849, A850, A851, A852, A853, A854, A855, A856, A857, A858, A859, A860, A861, A862, A863, A864, A865, A866, A867, A868, A869, A870, A871, A872, A873, A874, A875, A876, A877, A878, A879, A880, A881, A882, A883, A884, A885, A886, A887, A888, A889, A890, A891, A892, A893, A894, A895, A896, A897, A898, A899, A900, A901, A902, A903, A904, A905, A906, A907, A908, A909, A910, A911, A912, A913, A914, A915, A916, A917, A918, A919, A920, A921, A922, A923, A924, A925, A926, A927, A928, A929, A930, A931, A932, A933, A934, A935, A936, A937, A938, A939, A940, A941, A942, A943, A944, A945, A946, A947, A948, A949, A950, A951, A952, A953, A954, A955, A956, A957, A958, A959, A960, A961, A962, A963, A964, A965, A966, A967, A968, A969, A970, A971, A972, A973, A974, A975, A976, A977, A978, A979, A980, A981, A982, A983, A984, A985, A986, A987, A988, A989, A990, A991, A992, A993, A994, A995, A996, A997, A998, A999, A1000, A1001, A1002, A1003, A1004, A1005, A1006, A1007, A1008, A1009, A1010, A1011, A1012, A1013, A1014, A1015, A1016, A1017, A1018, A1019, A1020, A1021, A1022, A1023, A1024, A1025, A1026, A1027, A1028, A1029, A1030, A1031, A1032, A1033, A1034, A1035, A1036, A1037, A1038, A1039, A1040, A1041, A1042, A1043, A1044, A1045, A1046, A1047, A1048, A1049, A1050, A1051, A1052, A1053, A1054, A1055, A1056, A1057, A1058, A1059, A1060, A1061, A1062, A1063, A1064, A1065, A1066, A1067, A1068, A1069, A1070, A1071, A1072, A1073, A1074, A1075, A1076, A1077, A1078, A1079, A1080, A1081, A1082, A1083, A1084, A1085, A1086, A1087, A1088, A1089, A1090, A1091, A1092, A1093, A1094, A1095, A1096, A1097, A1098, A1099, A1100, A1101, A1102, A1103, A1104, A1105, A1106, A1107, A1108, A1109, A1110, A1111, A1112, A1113, A1114, A1115, A1116, A1117, A1118, A1119, A1120, A1121, A1122, A1123, A1124, A1125, A1126, A1127, A1128, A1129, A1130, A1131, A1132, A1133, A1134, A1135, A1136, A1137, A1138, A1139, A1140, A1141, A1142, A1143, A1144, A1145, A1146, A1147, A1148, A1149, A1150, A1151, A1152, A1153, A1154, A1155, A1156, A1157, A1158, A1159, A1160, A1161, A1162, A1163, A1164, A1165, A1166, A1167, A1168, A1169, A1170, A1171, A1172, A1173, A1174, A1175, A1176, A1177, A1178, A1179, A1180, A1181, A1182, A1183, A1184, A1185, A1186, A1187, A1188, A1189, A1190, A1191, A1192, A1193, A1194, A1195, A1196, A1197, A1198, A1199, A1200, A1201, A1202, A1203, A1204, A1205, A1206, A1207, A1208, A1209, A1210, A1211, A1212, A1213, A1214, A1215, A1216, A1217, A1218, A1219, A1220, A1221, A1222, A1223, A1224, A1225, A1226, A1227, A1228, A1229, A1230, A1231, A1232, A1233, A1234, A1235, A1236, A1237, A1238, A1239, A1240, A1241, A1242, A1243, A1244, A1245, A1246, A1247, A1248, A1249, A1250, A1251, A1252, A1253, A1254, A1255, A1256, A1257, A1258, A1259, A1260, A1261, A1262, A1263, A1264, A1265, A1266, A1267, A1268, A1269, A1270, A1271, A1272, A1273, A1274, A1275, A1276, A1277, A1278, A1279, A1280, A1281, A1282, A1283, A1284, A1285, A1286, A1287, A1288, A1289, A1290, A1291, A1292, A1293, A1294, A1295, A1296, A1297, A1298, A1299, A1300, A1301, A1302, A1303, A1304, A1305, A1306, A1307, A1308, A1309, A1310, A1311, A1312, A1313, A1314, A1315, A1316, A1317, A1318, A1319, A1320, A1321, A1322, A1323, A1324, A1325, A1326, A1327, A1328, A1329, A1330, A1331, A1332, A1333, A1334, A1335, A1336, A1337, A1338, A1339, A1340, A1341, A1342, A1343, A1344, A1345, A1346, A1347, A1348, A1349, A1350, A1351, A1352, A1353, A1354, A1355, A1356, A1357, A1358, A1359, A1360, A1361, A1362, A1363, A1364, A1365, A1366, A1367, A1368, A1369, A1370, A1371, A1372, A1373, A1374, A1375, A1376, A1377, A1378, A1379, A1380, A1381, A1382, A1383, A1384, A1385, A1386, A1387, A1388, A1389, A1390, A1391, A1392, A1393, A1394, A1395, A1396, A1397, A1398, A1399, A1400, A1401, A1402, A1403, A1404, A1405, A1406, A1407, A1408, A1409, A1410, A1411, A1412, A1413, A1414, A1415, A1416, A1417, A1418, A1419, A1420, A1421, A1422, A1423, A1424, A1425, A1426, A1427, A1428, A1429, A1430, A1431, A1432, A1433, A1434, A1435, A1436, A1437, A1438, A1439, A1440, A1441, A1442, A1443, A1444, A1445, A1446, A1447, A1448, A1449, A1450, A1451, A1452, A1453, A1454, A1455, A1456, A1457, A1458, A1459, A1460, A1461, A1462, A1463, A1464, A1465, A1466, A1467, A1468, A1469, A1470, A1471, A1472, A1473, A1474, A1475, A1476, A1477, A1478, A1479, A1480, A1481, A1482, A1483, A1484, A1485, A1486, A1487, A1488, A1489, A1490, A1491, A1492, A1493, A1494, A1495, A1496, A1497, A1498, A1499, A1500, A1501, A1502, A1503, A1504, A1505, A1506, A1507, A1508, A1509, A1510, A1511, A1512, A1513, A1514, A1515, A1516, A1517, A1518, A1519, A1520, A1521, A1522, A1523, A1524, A1525, A1526, A1527, A1528, A1529, A1530, A1531, A1532, A1533, A1534, A1535, A1536, A1537, A1538, A1539, A1540, A1541, A1542, A1543, A1544, A1545, A1546, A1547, A1548, A1549, A1550, A1551, A1552, A1553, A1554, A1555, A1556, A1557, A1558, A1559, A1560, A1561, A1562, A1563, A1564, A1565, A1566, A1567, A1568, A1569, A1570, A1571, A1572, A1573, A1574, A1575, A1576, A1577, A1578, A1579, A1580, A1581, A1582, A1583, A1584, A1585, A1586, A1587, A1588, A1589, A1590, A1591, A1592, A1593, A1594, A1595, A1596, A1597, A1598, A1599, A1600, A1601, A1602, A1603, A1604, A1605, A1606, A1607, A1608, A1609, A1610, A1611, A1612, A1613, A1614, A1615, A1616, A1617, A1618, A1619, A1620, A1621, A1622, A1623, A1624, A1625, A1626, A1627, A1628, A1629, A1630, A1631, A1632, A1633, A1634, A1635, A1636, A1637, A1638, A1639, A1640, A1641, A1642, A1643, A1644, A1645, A1646, A1647, A1648, A1649, A1650, A1651, A1652, A1653, A1654, A1655, A1656, A1657, A1658, A1659, A1660, A1661, A1662, A1663, A1664, A1665, A1666, A1667, A1668, A1669, A1670, A1671, A1672, A1673, A1674, A1675, A1676, A1677, A1678, A1679, A1680, A1681, A1682, A1683, A1684, A1685, A1686, A1687, A1688, A1689, A1690, A1691, A1692, A1693, A1694, A1695, A1696, A1697, A1698, A1699, A1700, A1701, A1702, A1703, A1704, A1705, A1706, A1707, A1708, A1709, A1710, A1711, A1712, A1713, A1714, A1715, A1716, A1717, A1718, A1719, A1720, A1721, A1722, A1723, A1724, A1725, A1726, A1727, A1728, A1729, A1730, A1731, A1732, A1733, A1734, A1735, A1736, A1737, A1738, A1739, A1740, A1741, A1742, A1743, A1744, A1745, A1746, A1747, A1748, A1749, A1750, A1751, A1752, A1753, A1754, A1755, A1756, A1757, A1758, A1759, A1760, A1761, A1762, A1763, A1764, A1765, A1766, A1767, A1768, A1769, A1770, A1771, A1772, A1773, A1774, A1775, A1776, A1777, A1778, A1779, A1780, A1781, A1782, A1783, A1784, A1785, A1786, A1787, A1788, A1789, A1790, A1791, A1792, A1793, A1794, A1795, A1796, A1797, A1798, A1799, A1800, A1801, A1802, A1803, A1804, A1805, A1806, A1807, A1808, A1809, A1810, A1811, A1812, A1813, A1814, A1815, A1816, A1817, A1818, A1819, A1820, A1821, A1822, A1823, A1824, A1825, A1826, A1827, A1828, A1829, A1830, A1831, A1832, A1833, A1834, A1835, A1836, A1837, A1838, A1839, A1840, A1841, A1842, A1843, A1844, A1845, A1846, A1847, A1848, A1849, A1850, A1851, A1852, A1853, A1854, A1855, A1856, A1857, A1858, A1859, A1860, A1861, A1862, A1863, A1864, A1865, A1866, A1867, A1868, A1869, A1870, A1871, A1872, A1873, A1874, A1875, A1876, A1877, A1878, A1879, A1880, A1881, A1882, A1883, A1884, A1885, A1886, A1887, A1888, A1889, A1890, A1891, A1892, A1893, A1894, A1895, A1896, A1897, A1898, A1899, A1900, A1901, A1902, A1903, A1904, A1905, A1906, A1907, A1908, A1909, A1910, A1911, A1912, A1913, A1914, A1915, A1916, A1917, A1918, A1919, A1920, A1921, A1922, A1923, A1924, A1925, A1926, A1927, A1928, A1929, A1930, A1931, A1932, A1933, A1934, A1935, A1936, A1937, A1938, A1939, A1940, A1941, A1942, A1943, A1944, A1945, A1946, A1947, A1948, A1949, A1950, A1951, A1952, A1953, A1954, A1955, A1956, A1957, A1958, A1959, A1960, A1961, A1962, A1963, A1964, A1965, A1966, A1967, A1968, A1969, A1970, A1971, A1972, A1973, A1974, A1975, A1976, A1977, A1978, A1979, A1980, A1981, A1982, A1983, A1984, A1985, A1986, A1987, A1988, A1989, A1990, A1991, A1992, A1993, A1994, A1995, A1996, A1997, A1998, A1999, A2000, A2001, A2002, A2003, A2004, A2005, A2006, A2007, A2008, A2009, A2010, A2011, A2012, A2013, A2014, A2015, A2016, A2017, A2018, A2019, A2020, A2021, A2022, A2023, A2024, A2025, A2026, A2027, A2028, A2029, A2030, A2031, A2032, A2033, A2034, A2035, A2036, A2037, A2038, A2039, A2040, A2041, A2042, A2043, A2044, A2045, A2046, A2047, A2048, A2049, A2050, A2051, A2052, A2053, A2054, A2055, A2056, A2057, A2058, A2059, A2060, A2061, A2062, A2063, A2064, A2065, A2066, A2067, A2068, A2069, A2070, A2071, A2072, A2073, A2074, A2075, A2076, A2077, A2078, A2079, A2080, A2081, A2082, A2083, A2084, A2085, A2086, A2087, A2088, A2089, A2090, A2091, A2092, A2093, A2094, A2095, A2096, A2097, A2098, A2099, A2100, A2101, A2102, A2103, A2104, A2105, A2106, A2107, A2108, A2109, A2110, A2111, A2112, A2113, A2114, A2115, A2116, A2117, A2118, A2119, A2120, A21		

Client	Specification	Material
Amu Darya Project in Turkmenistan (2012)	$\Phi 327.9 \times (3+10)$	N08825+Q245R
	$\Phi 203.3 \times (3+10)$	N08825+X65
	$\Phi 168 \times (3+10)$	N08825+X65
10 Billion m3 Natural Gas Production Capacity Construction Project in South Yolotan, Turkmenistan (2013)	$\Phi 406.4 \times (3+15.4)$	N08825+L415
	$\Phi 219.1 \times (3+10)$	N08825+L360
	$\Phi 711 \times (3+30)$	S31603+Q345R(R-IIIC)
400 Mt/yr Coal-to-Liquid Project of Shenhua Ningxia Coal Industry Group Co.,Ltd. (2014)	$\Phi 2032 \times (3+14)$	022Cr19Ni10+Q245R
	$\Phi 1219 \times (3+30)$	022Cr19Ni10+15CrMoR
	$\Phi 813 \times (3+12)$	022Cr19Ni10+15CrMoR
PEP (AUST) PTY LTD	$\Phi 355.6 \times (3+15)$	N02201+SA516-Gr70
China Huanqiu Contracting & Engineering Co., Ltd.	$\Phi 660 \times (3+18)$	316L+09MnNiDR
	$\Phi 1118 \times (3+24)$	316L+Q345B
Beijing Zhongji Fonda Trading Co., Ltd.	$\Phi 1016 \times (3+22)$	S30403+Q245R
	$\Phi 1219 \times (3+30)$	S30403+15CrMoR
Synfuels China Technology Co., Ltd. (2015)	$\Phi 610 \times (3+10)$	022Cr19Ni10+Q245R
	$\Phi 1422 \times (3+14)$	022Cr19Ni10+Q245R
Hualu-Hengsheng (Jingzhou) Co., Ltd. (2023)	$\Phi 1829 \times (3+14) \times 12110$	S31603+Q345R
	$\Phi 1829 \times (3+14) \times 12030$	S31603+Q345R
Petrochemical (Dalian) New Materials Technology Co., Ltd. (2023)	$\Phi 2642 \times (3+18) \times 2240$	S31603+Q245R
	$\Phi 2038 \times (3+16) \times 6500$	S31603+Q245R
Quzhou Huayou Cobalt Co., Ltd.	$\Phi 168 \times (3+16) \times 6800$	625+Q245R
	$\Phi 289 \times (3+16) \times 3800$	625+Q245R
Shandong Feicheng Haijing Salt Chemical Co., Ltd.	$\Phi 800 \times (3+16) \times 9000$	825+X80
	$\Phi 289 \times (3+16) \times 9000$	825+X65

## 四川惊雷科技股份有限公司

Sichuan Jinglei Science And Technology Co.,Ltd.

Address: Jinglei Technology Industrial Park, Cuiping District,  
Yibin City, Sichuan Province

Postal Code: 644000

Phone: +86-18081666786, +86-13708159553

Fax: +86 831-6876999

Email: sales@jinglei-china.com

Website: www.jinglei-china.com